

**DIRECTION TO  
FAST LANE SWITZERLAND TRAINING CENTRE  
GLATTZENTRUM / SHOPPING CENTER GLATT IN WALLISELLEN**

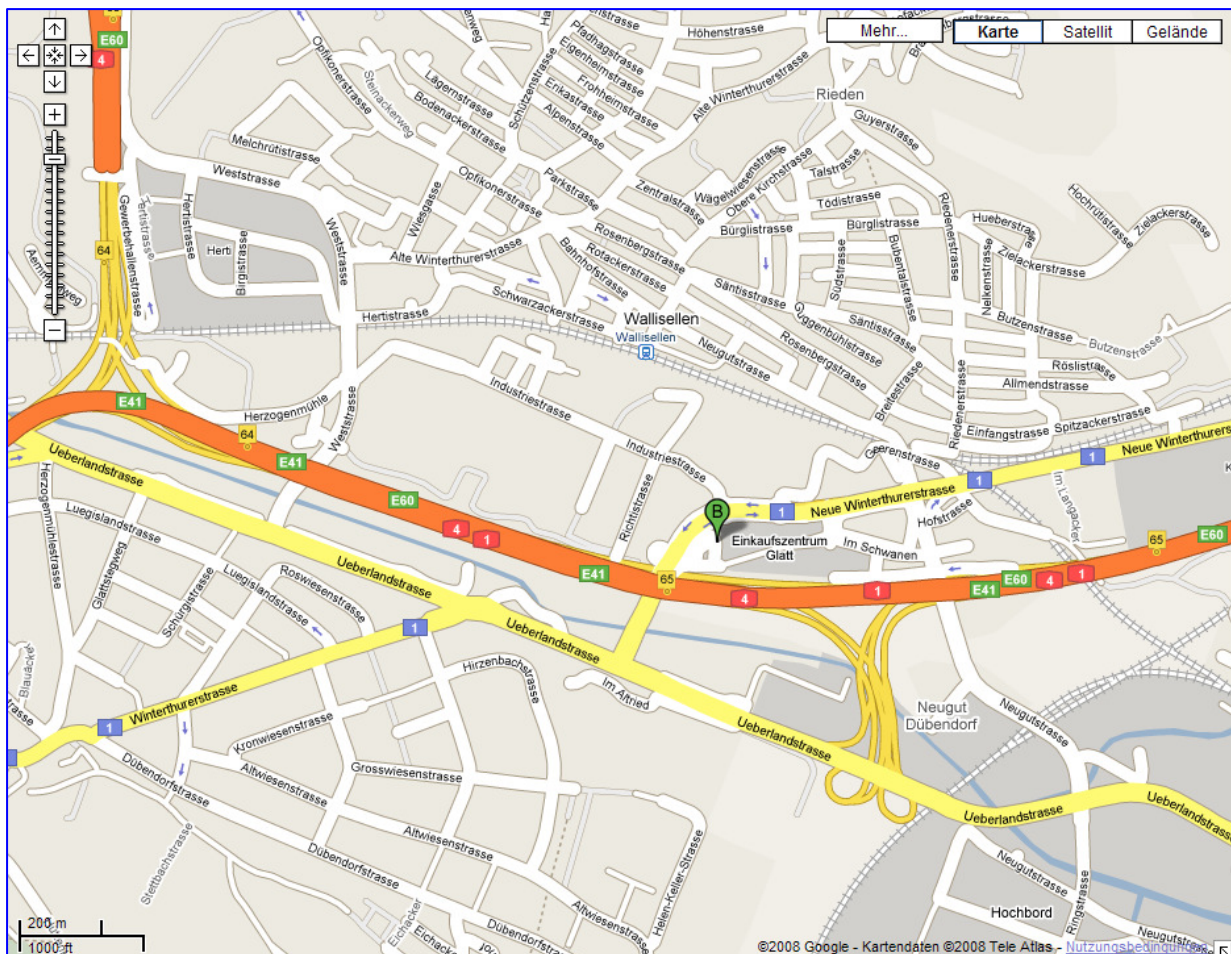
**Fast Lane Institute for Knowledge Transfer (Switzerland) AG  
Shopping Center Glatt (Glattzentrum)  
Glatt Com (Parking Level 12 / 1<sup>st</sup> Floor)  
8301 Glattzentrum/Wallisellen (Zurich)**

**Phone. No.: +41 44 832 50 80**

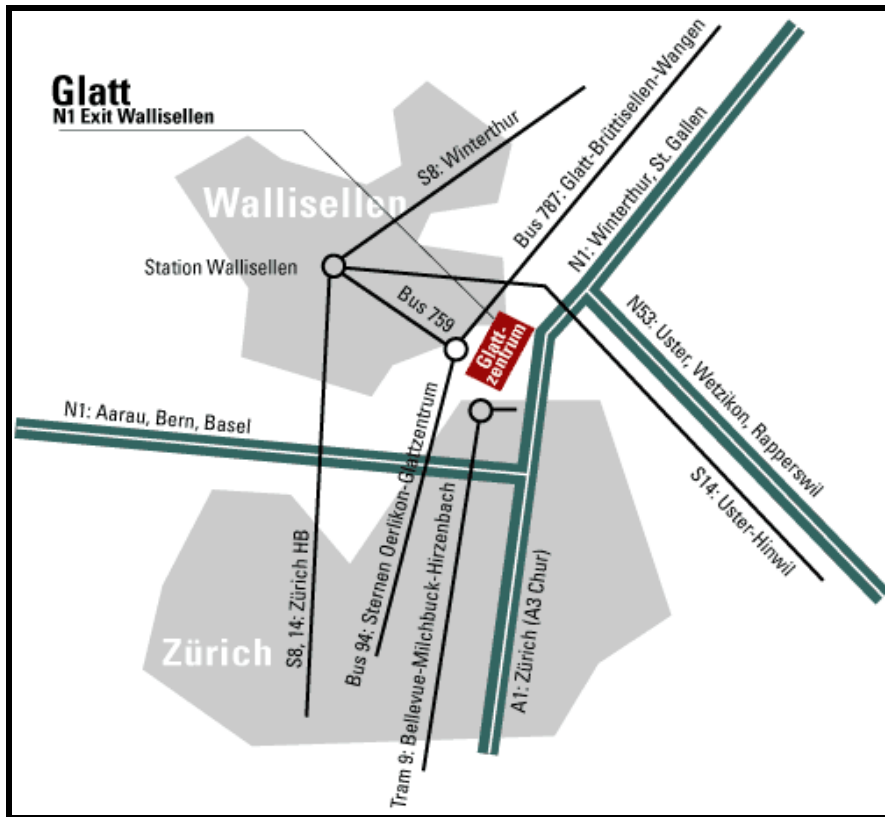
**Fax No.: + 41 44 832 50 85**

**Web: [www.flane.ch](http://www.flane.ch)**

**E-Mail: [info@flane.ch](mailto:info@flane.ch)**



## General Overview Fast Lane Switzerland:



### Driving Direction to Fast Lane:

#### By car from Zurich Airport

Distance from the Airport Zurich: ca. 8.0 km ~ 10 minutes by car

- ⇨ Head south on "Vorfahrtstrasse" toward "Butzenbuelring" (0.5 km)
- ⇨ Slight right at "Butzenbuelring" (0.2 km)
- ⇨ Slight right to merge onto Autobahn A51 (highway) direction "Zurich" (3.7 km)
- ⇨ Take the exit 64 toward A1/A4/E41 direction "St. Gallen/Schaffhausen" (0.2 km)
- ⇨ Keep left at the fork, follows signs for "Schaffhausen/St. Gallen/E41" and merge onto A1/A4/E41 (1.7 km)
- ⇨ Take the exit 65 toward "Zurich-Schwamendingen/Wallisellen/Duebendorf" (0.6 km)
- ⇨ Keep right at the fork to continue toward direction "Wallisellen" and merge onto "Ueberlandstrasse" (1<sup>st</sup> traffic light) (0.7 km)
- ⇨ Turn right at Route 1/"Neue Winterthurerstrasse" (2<sup>nd</sup> traffic light) (0.2 km) and slight right direction "Glattzentrum" (280 m)
- ⇨ Slight right to stay on "Glattzentrum" (0.1 km)
- ⇨ Turn right (now you are on the parking deck 11 of the Glattzentrum). Follow the signpost to parking deck/area n° 12 where you find parking places free of charge.
- ⇨ Fast Lane is situated in the "Glatt Com"-building. You have to enter directly from outside the Shopping Centre, from the parking deck 12 (P12).
- ⇨ Follow the Fast Lane signs and take the Glatt Com elevator to the 1<sup>st</sup> floor.



See also Google Maps Route planner: <http://www.flane.ch/school/1>

## With public transportation to Fast Lane:

### By S-Bahn (Municipal Railway)

Take the S14 or the S8 train from Zurich-Hauptbahnhof / Main Station, exit at Wallisellen station (10 min.).

For more information take a look at SBB Web: <http://www.sbb.ch/en/index.htm>

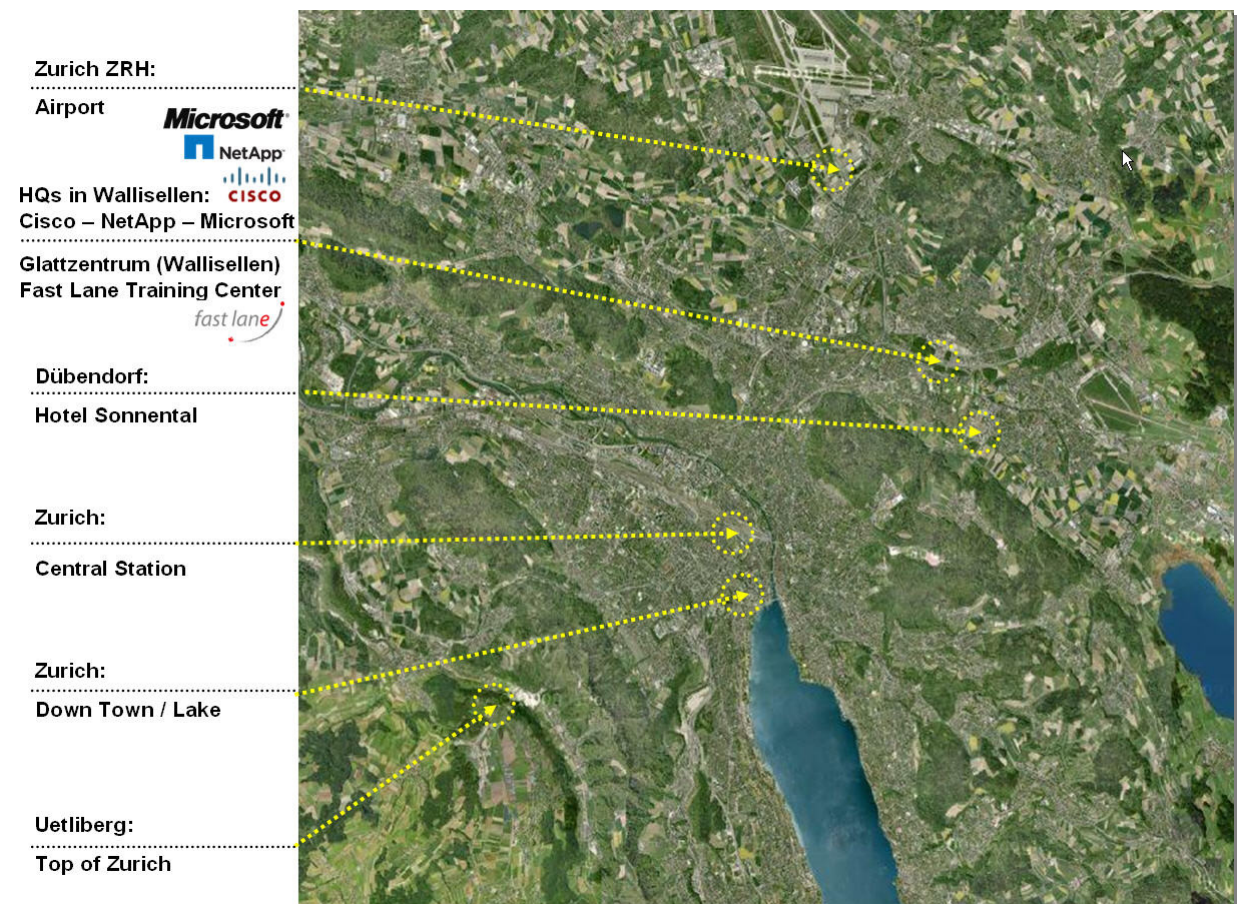
### By Bus

At Wallisellen station please take the bus n° 759, stop directly beside the "Glattzentrum" or you take a walk (from Wallisellen station to Glattzentrum: ca. 7 minutes).

Inside of the "Glattzentrum" please follow the signs "P12" (parking 12) & "Glatt Com".

Fast Lane is situated in the "Glatt Com"-building. You have to enter directly from outside the Shopping Centre, from the parking deck 12 (P12). Follow the Fast Lane signs and take the Glatt Com elevator to the 1<sup>st</sup> floor.

(or you can ask at the information desk for the "Glatt Com", where Fast Lane is situated).



☞ If you have any questions, please call us: **FAST LANE +41 (0)44 832 50 80** ☎